

inaugural

access class

world championships

august 30 - september 5

2.3 / 303 / Liberty / SKUD

WWW.ACCESSCLASS.ORG

Notice of Race

Whitby Yacht Club

in conjunction with the

International Access Class Association

are hosting the

Inaugural Access Class Combined World Championships

August 30 through September 5, 2007

Whitby, Ontario, Canada



International Access Class Association



Inaugural Access Class Combined World Championships

Incorporating:

- 2007 Access 2.3 Single Person Canadian, North American and World Championships
- 2007 Access 2.3 Two Person Canadian, North American and World Championships
- 2007 Access 303 Single Person Canadian, North American and World Championships
- 2007 Access 303 Two Person Canadian, North American and World Championships
- 2007 Access Liberty Open Canadian, North American and World Championships
- 2007 Access Liberty Servo Canadian, North American and World Championships
- 2007 SKUD 18 International Championship

To be conducted at Whitby, Ontario, Canada from August 30 through September 5, 2007. The Organising Authority is the Whitby Yacht Club in conjunction with the International Access Class Association.

NOTICE OF RACE

1 RULES

1.1 The regatta will be governed by the rules as defined in *The Racing Rules of Sailing*.

1.2 No national authority prescriptions will apply.

1.3 (a) Racing rules 41, 44.1, 61.1 & 63.3 will be changed as follows:

Rule 41 Outside Help will be altered. In all Divisions, outside assistance is permitted for boats that are servo assisted, where sailors are vision impaired, or to other boats at the discretion of the Organising Authority. This assistance also applies to reefing and un-reefing these boats where required. Where electronic or verbal instructions are used to assist sailors, this shall be limited to safety information and, for blind & vision impaired sailors, to directional information

Rule 44.2 "Two-Turns Penalty" will be altered so the penalty for a breach of a RRS Part 2 rule will be a one turn including one tack and one gybe.

Rule 61.1(a) "Informing the protestee" will be altered so that the hail "Protest" is not required but should be made where possible.

Rule 63.3(a) "Protest Hearing" will be altered such that a representative at a protest hearing need not have been on board at the time of the incident.

The changes will appear in full in the sailing instructions.

(b) Sailor Weight Equalisation will apply for the Liberty Divisions 7 & 8 as per Item C.5 of the Class Rules

(c) SKUD 18 Division 9 will sail in Paralympic configuration with two crew seated on the centreline

1.4 If there is a conflict between languages the English text will take precedence.

2 ADVERTISING

Advertising will be Category C.

25% of the hull area commencing at the bow on each competing yacht may be reserved for sponsor recognition. Competitors may be required to display event

sponsor/s name(s) or logo(s) and bow numbers. If required, the Organising Authority will supply these items and they shall be affixed as prescribed in the Sailing Instructions.

3 ELIGIBILITY AND ENTRY

3.1 The regatta is open to all boats of the Access 2.3 Wide, Access 2.3 Single, Access 303 Wide, Access Liberty and SKUD 18 classes.

3.2 Eligible boats may enter by completing the attached form and sending it, together with the required fee, to Whitby Yacht Club by 5pm on August 10, 2007.

3.3 Late entries will be accepted under the following conditions: A late entry supplement of \$20 CAD will apply for entries received after 5pm on August 10, 2007

3.4 Competitors are required to be a current financial member of their National Access Class Association or the International Access Class Association.

3.5 The following restrictions apply:

a) Blind & Vision Impaired Sailors with the equivalent of an IBSA Classification B1, B2 or B3 are not eligible to enter the Access Liberty divisions.

b) Blind & Vision Impaired Sailors may enter the Two Person divisions or the Single Person division. Those who wish to enter a Single Person division are required to provide their own IRB Support Boat and two crew who will operate under the instructions of the Race Committee. The number of Blind & Vision Impaired Sailors in any division may be restricted at the discretion of the Organising Authority.

c) The Organising Authority may re-allocate sailors who enter divisions 1,2 or 3 to another of these divisions.

4 CLASSIFICATION

The ISAF Sailor Classification Code will not apply.

5 FEES

5.1 Required fees are as follows:

| <i>Class</i> | <i>Fee</i> |
|--|------------|
| Single Person Divisions 1, 2, 3, 5, 7 & 8 | \$100 CAD |
| Two Person Divisions 4, 6 & 9 | \$150 CAD |
| Late Fee (if entry received after August 10, 2007) | \$20 CAD |

6 DIVISIONS

The regatta will be sailed in divisions as follows:

| | |
|------------|---|
| Division 1 | Access 2.3 Single Person World Championship (Experienced) |
| Division 2 | Access 2.3 Single Person (Intermediate) |
| Division 3 | Access 2.3 Single Person (Beginner) |
| Division 4 | Access 2.3 Two Person World Championship |
| Division 5 | Access 303 Single Person World Championship |
| Division 6 | Access 303 Two Person World Championship |
| Division 7 | Access Liberty World Championship |
| Division 8 | Access Liberty Servo Assist World Championship |
| Division 9 | SKUD 18 International Championship |
| Division 0 | Electric Assist (combines with any division 1-3) |

7 SCHEDULE

7.1 Registration:

| | | |
|--------------------|-----------|---------|
| Thursday August 30 | From 0900 | To 1100 |
| Thursday August 30 | From 1500 | To 2000 |
| Friday August 31 | From 0900 | To 1200 |
| Friday August 31 | From 1500 | To 1800 |

7.2 Measurement and inspection:

| | | |
|--------------------|-----------|---------|
| Thursday August 30 | From 1000 | To 1600 |
| Friday August 31 | From 1000 | To 1600 |

7.3 Dates of racing:

| | | | |
|------------------|-----------------------|-----------|---------|
| Thu. August 30 | Practice Races | From 1300 | To 1600 |
| Fri. August 31 | Practice Races | From 1100 | To 1600 |
| Sat. September 1 | Racing | From 1100 | |
| Sun. September 2 | Racing | From 1100 | |
| Mon. September 3 | Reserved for re-sails | | |
| Tue. September 4 | Racing | From 1100 | |
| Wed. September 5 | Racing | From 1100 | |

7.4 Number of races:

| Fleets | <i>Divisions</i> | <i>Number</i> | <i>Races per day</i> |
|---------|------------------|---------------|----------------------|
| Fleet A | 1, 5, 7 & 8 | 10 | 2 or 3 |
| Fleet B | 2, 3, 4 & 6 | 8 | 2 |
| Fleet C | 9 | 8 | 2 or 3 |

7.5 The scheduled time of the warning signal for the first race each day is 1055hrs.

8 MEASUREMENTS

The following measurements may be taken: Sail & foil dimensions, hull & foil weight, specification of fittings.

9 SAILING INSTRUCTIONS

The sailing instructions will be available at registration.

10 VENUE

10.1 Attachment A shows the location of the regatta venue.

10.2 Attachment B shows the marina locations.

10.3 Attachment C shows the location of the racing areas.

11 THE COURSES

The courses to be sailed will be as detailed in the Sailing Instructions.

12 PENALTY SYSTEM

12.1 For all classes rules 44.1 and 44.2 are changed so that only one turn, including one tack and one gybe, is required.

12.2 Decisions of the jury will be final as provided in rule 70.4.

13 SCORING

13.1 The Low Point System of Appendix A will apply with the following provisions:

13.2 3 races are required to be completed to constitute a series.

- 13.3**
- (a) When fewer than 5 races have been completed, a boat's series score will be the total of her race scores.
 - (b) When from 5 to 9 races have been completed, a boat's series score will be the total of her race scores excluding her worst score.
 - (c) When 9 or more races have been completed, a boat's series score will be the total of her race scores excluding her two worst scores.

14 SUPPORT BOATS

Support boats shall be marked with a flag not less than 20cm hoist x 30cm fly bearing the country designation or national flag, or a flag issued by the organising authority.

15 BERTHING

Boats shall be kept in their assigned places in the boat park or marinas.

16 HAUL-OUT RESTRICTIONS

SKUD 18 or Liberty class boats shall not be hauled out during the regatta except with and according to the terms of prior written permission of the race committee.

17 DIVING EQUIPMENT AND PLASTIC POOLS

Underwater breathing apparatus and plastic pools or their equivalent shall not be used around keel boats between the preparatory signal of the first race and the end of the regatta.

18 RADIO COMMUNICATION

Except with the prior written permission of the race committee, a boat shall neither make radio transmissions while racing nor receive radio communications not available to all boats. This restriction also applies to mobile telephones and internet devices.

19 PRIZES

For divisions comprising 5 or more entries, prizes will be awarded for first, second and third place boats in

- 2007 Access 2.3 Single Person Canadian, North American and World Championships
- 2007 Access 2.3 Two Person Canadian, North American and World Championships
- 2007 Access 303 Single Person Canadian, North American and World Championships
- 2007 Access 303 Two Person Canadian, North American and World Championships
- 2007 Access Liberty Open Canadian, North American and World Championships

- 2007 Access Liberty Servo Canadian, North American and World Championships
 - 2007 SKUD 18 International Championship
- Other prizes may be awarded at the discretion of the organising authority.

20 SAFETY

Competitors shall wear a Personal Floatation Device approved by a National Standards Authority at all times whilst afloat, on pontoons or on gangways during the period of the event including any training and activities outside of scheduled race times. They may be removed only briefly, while changing clothing.

21 DISCLAIMER OF LIABILITY

Competitors participate in the regatta entirely at their own risk. See rule 4, Decision to Race. The organizing authority will not accept any liability for material damage or personal injury or death sustained in conjunction with or prior to, during, or after the regatta.

22 INSURANCE

Each participating boat shall be insured with valid third-party liability insurance with a minimum cover of \$1 Million CAD (Canadian Dollars) per event or the equivalent.

23 FURTHER INFORMATION

For further information please contact:

Whitby Yacht Club

PO Box 321
 WHITBY, ONTARIO, CANADA
 Telephone: +1 905 668 1391
 Facsimile: +1 905 668 6007

Email

Whitby Yacht Club Office – wyc@wyc.ca
 Whitby Yacht Club Event Information – chris.j.mace@hotmail.com
 Whitby Yacht Club Accommodation & Transport – rick@enableinc.ca
 International Access Class Association – david@accessclass.org

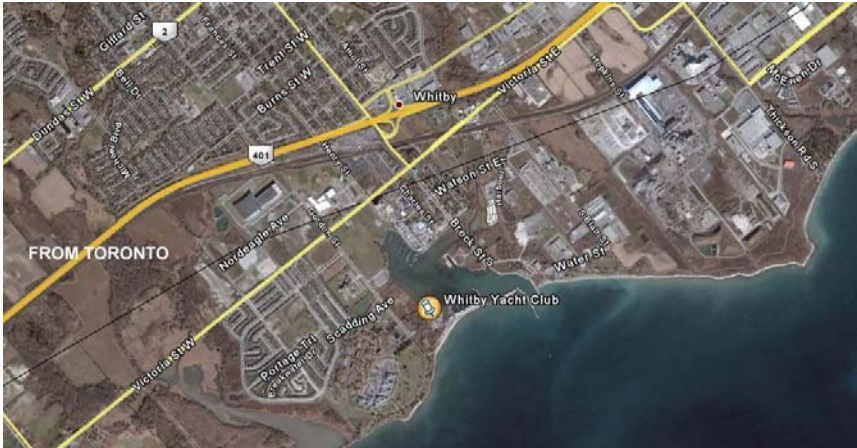
Websites

International Access Class Association – www.accessclass.org
 Whitby Yacht Club – www.wyc.ca
 Regional Tourism - www.durhamtourism.ca

The following additional information for competitors will be posted when available on the Whitby Yacht Club and Access Class websites:

- Charter Boat availability and requests
- Social Program
- Catering
- Accommodation
- Location & Transport

Appendix A – Venue Location



Appendix B – Whitby Harbour



Appendix C – Racing Area



Application for Entry

Inaugural Access Class Combined World Championships

Complete the form below and Fax to +1 905 668 6007 or Post to:
Whitby Yacht Club, PO Box 321, WHITBY, ONTARIO, CANADA

MNA Affiliation / Membership Number:

National Access Class Association Membership: **Yes / No** (IACA application forms available at registration)

Entrant's Title: **Mr / Mrs / Ms / Other** **Gender:** M / F

Entrant's First Name:

Entrant's Surname: **Date of Birth:** / /

Street Address:

Postcode:

Nationality:

Club:

Email:

Phone: (H) **Phone: (W)**

Facsimile: **Mobile:**

Emergency Contact Name:

Emergency Contact Phone Number: (H)

Phone: (W) **Mobile:**

Competition History: Best placing in National Championships: Year:

Shirt Size: XS S M L XL XXL

Boat Details

Division: **1** – 2.3 Single Person / **2** – 2.3 Single Person / **3** – 2.3 Single Person / **4** – 2.3 Two Person
(circle) **5** – 303 Single Person / **6** – 303 Two Person / **7** – Liberty / **8** – Liberty Servo
 9 – SKUD 18 / **0** – Servo (with any Div 1-3)

Supplying Own Boat: Yes / No

Supplying Own Sails: Yes / No

Boat Type Supplied / Preferred: 2.3 Single / 2.3 Wide / 303 Wide / Liberty / Servo Electric

Sail Number: **Boat Name:**

Deck / Hull Color:

Sponsor / Advertiser Names Displayed:

Crew Details (if applicable)

| | | |
|--|-----------------|--|
| National Access Class Association Membership: | Yes / No | (IACA application forms available at registration) |
|--|-----------------|--|

| | | | |
|----------------------|------------------------------|----------------|--------------|
| Crew's Title: | Mr / Mrs / Ms / Other | Gender: | M / F |
|----------------------|------------------------------|----------------|--------------|

Crew's First Name:

| | | | |
|------------------------|-----------------------|----------|----------|
| Crew's Surname: | Date of Birth: | / | / |
|------------------------|-----------------------|----------|----------|

Shirt Size: XS S M L XL XXL

Street Address:

Postcode:

Club:

Details of Insurance Policy

| | |
|-----------------|-----------------------|
| Company: | Policy Number: |
|-----------------|-----------------------|

| | | | |
|---|-----------|-----------------|---------------------|
| Public Liability Insurance Cover | \$ | _____(Currency) | Expiry Date: |
|---|-----------|-----------------|---------------------|

Payment Details Divs 1, 2, 3, 5, 7 & 8 \$100CAD Divs 4, 6 & 9 \$150CAD Late Fee \$20CAD

| | | |
|-------------------------|------------|-----------|
| Cheque attached: | Yes | No |
|-------------------------|------------|-----------|

| | |
|---------------------|--------------------------|
| Credit Card: | Visa / Mastercard |
|---------------------|--------------------------|

Credit Card Number:

| | |
|-----------------------------|----------------------|
| Expiry Date on card: | Name on card: |
|-----------------------------|----------------------|

Marshalling Information

Name:

Nationality:

Division:

Please tick box for assistance required when transferring into boats

I require:

No Assistance

Minimal Assistance

Substantial Assistance

Manual Lifting OK

Can **only** be transferred to boat by a hoist (cannot be manually lifted)

I use:

A Wheelchair

Walking frame

Crutches

Other Aid.....

No Aid, but have mobility difficulty

Not Applicable.....

Optional (for statistical purposes)

Type of disability?

Any Other Comments:

.....
.....
.....